

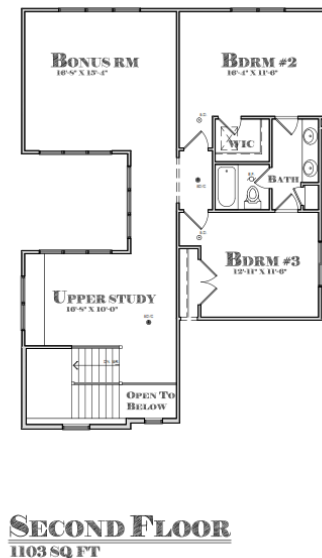
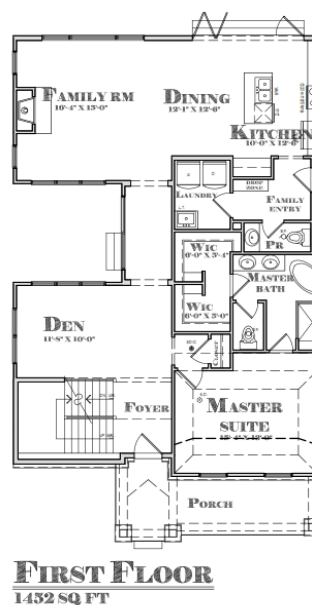
930 PALMER

PLYMOUTH, MICHIGAN 48170

2,555 SF // 3 Bedroom // 2.5 Bath // \$669,900

KEY FEATURES

- Within walking distance of Kellogg park and downtown Plymouth
- Unique master suite on first floor
- Upper study and additional bonus room
- **Stainless steel appliances**
- Open family room with gas fireplace
- 9 foot ceilings and custom flooring
- **Sprinklers and sod**
- **Custom entry doors**



HOMES OF
Elegance

walkablecommunities.com

23370 Commerce Drive // Farmington Hills Michigan 48335 // 248-426-5652

In the builder's effort to meet homebuyer's expectations, we reserve the right to modify features, price, specifications And/or to change or discontinue models without notice or obligation. The artist's drawings of the elevation and floor plan are not an exact representation or drawn to scale. Specific details such as doors, windows, walls and other features depicted herein will vary depending on elevation style and options selected. Photos are of similar homes.

Copyright 2016 Homes of Elegance Walkable Communities 03/30/16

