

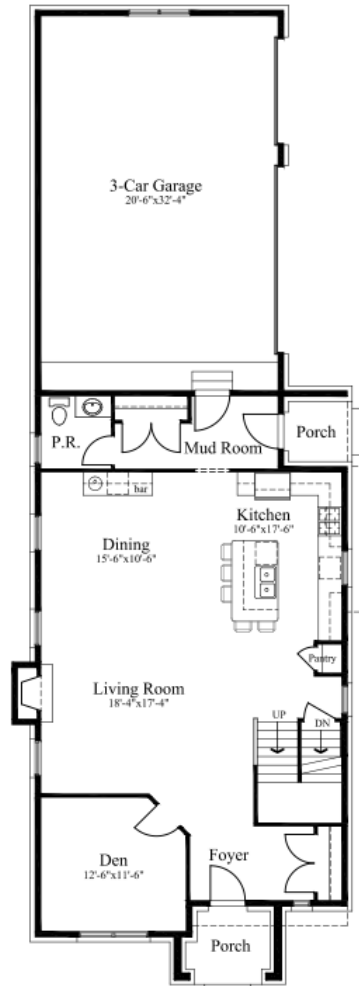
# 2291 DORCHESTER

BIRMINGHAM, MICHIGAN 48009

3,145 SF // 4 Bedroom // 2.1 bath // \$799,900

## KEY FEATURES

- Close to Pembroke Park
- Corner Lot
- High-end quality meets custom craftsmanship in this spacious home
- Open kitchen with high-end quality cabinetry and granite island with snack bar extension and large pantry
- High-end granite countertops with custom ceramic back-splash
- Stainless steel appliances
- Open dining room with wine bar
- Open living room with gas fireplace with custom ceramic tile surround and recessed lighting
- Master suite with his and hers walk-in closets
- Luxury custom bathroom with dual sinks large soaking tub, and ceramic tile
- Nine-foot ceilings and custom flooring on the first floor
- Second floor laundry room
- Open basement with 8-foot ceiling and egress window
- 95% high-efficiency furnace and central air
- 3-Car attached garage with opener
- Custom entry doors
- Lawn sprinklers and sod to be installed
- Work with our in-house designer to pick out colors, selections, and put your personal touches on your future home



FIRST FLOOR PLAN



SECOND FLOOR PLAN

HOMES OF  
*Elegance*

walkablecommunities.com

23370 Commerce Drive // Farmington Hills Michigan 48335 // 248-426-5652

*In the builder's effort to meet homebuyer's expectations, we reserve the right to modify features, price, specifications And/or to change or discontinue models without notice or obligation. The artist's drawings of the elevation and floor plan are not an exact representation or drawn to scale. Specific details such as doors, windows, walls and other features depicted herein will vary depending on elevation style and options selected. Photos are of similar homes.*

Copyright 2016 Homes of Elegance Walkable Communities 03/30/16

