

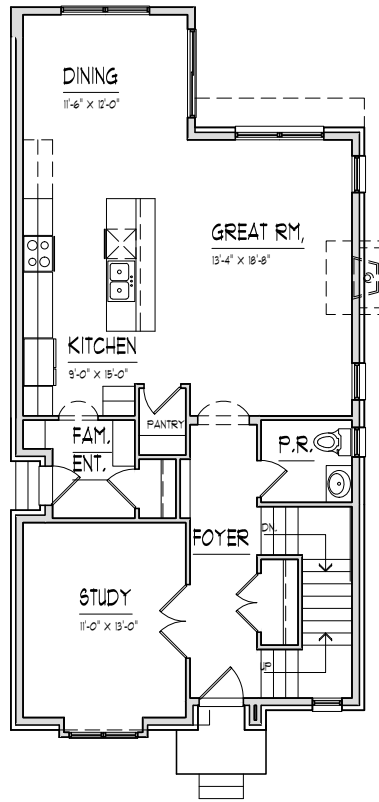
1951 HOLLAND

BIRMINGHAM, MICHIGAN 48009

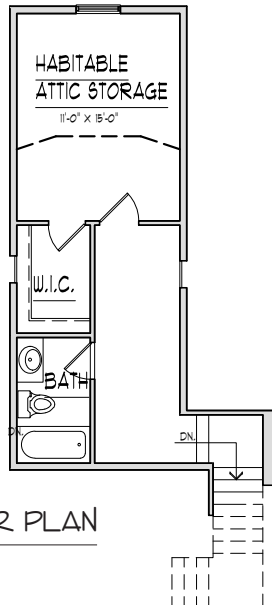
2,527 SF // 4 Bedroom // 3.1 Bath // \$670,000

KEY FEATURES

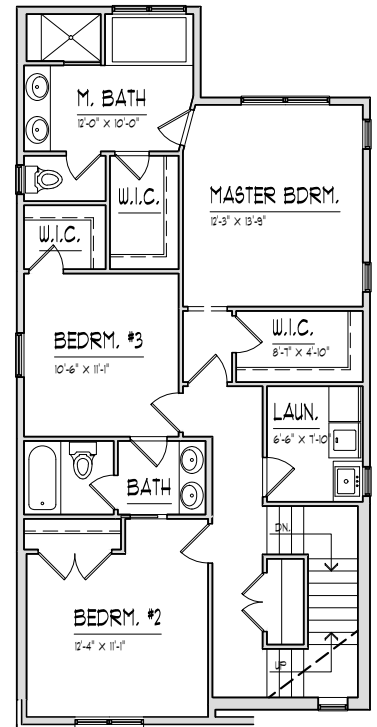
- Beautiful open kitchen features custom cabinetry, state-of-the-art stainless steel appliances and large pantry
- High end granite kitchen countertops with custom ceramic backsplash
- Cozy granite kitchen island with snack bar extension
- Open great room and dining room adjacent to kitchen, perfect for entertaining
- Great room features gas fire place with custom ceramic tile surround and recessed lighting
- Spacious master suite features walk-in closet and private bath
- Master bath features dual sinks with gorgeous granite countertop, large shower with bench and contemporary tile
- Finished 455 square foot third level features bedroom, ample storage space and full bath
- Basement with 8' ceiling, egress window
- Large mud room with drop zone
- Second floor laundry with tub
- Detached, 2-car garage



FIRST FLOOR PLAN



THIRD FLOOR PLAN



SECOND FLOOR PLAN

HOMES OF
Elegance

walkablecommunities.com

23370 Commerce Drive // Farmington Hills Michigan 48335 // 248-426-5652

In the builder's effort to meet homebuyer's expectations, we reserve the right to modify features, price, specifications and/or to change or discontinue models without notice or obligation. The artist's drawings of the elevation and floor plan are not an exact representation or drawn to scale. Specific details such as doors, windows, walls and other features depicted herein will vary depending on elevation style and options selected. Photos are of similar homes.

Copyright 2016 Homes of Elegance Walkable Communities 02/11/16

